

The Standard's eApp



Submitting applications with eApp makes applying for income protection insurance easier for you and your clients.

Products for eApp

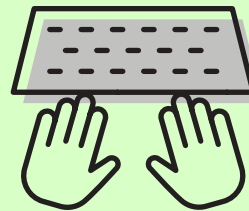
- Platinum Advantage
- Business Overhead Protector®

All applications will be TeleApp.

Quote information can easily be imported into an application. We integrated The Standard's Illustration and eApp software. Now you don't have to enter information a second time. And you can ensure the information is the same from the quote to the application.

Need Help?

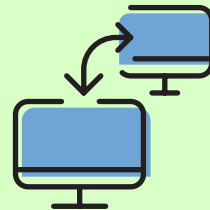
Check out the [Getting Started Guide](#) or contact your General Agent.



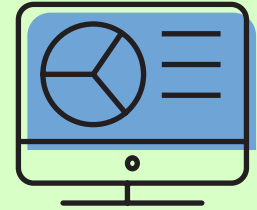
Quick fill-and-sign features



Allows your client to sign remotely or in person



Built-in checks to help you and your clients complete the application quickly



Ensures your application is in good order before you submit it

How to Access eApp

You'll visit eApp through [The Standard's web portal](#). This is where you access Policy Inquiry and your commission statements.

Once logged in, you'll see a section titled Disability Insurance Applications. Click **Go to Applications** to the right.

Your agency can also start an application for you. They'll send you an email via the eApp system to alert you when the application has been "transferred" to you and is ready for your review. You'll need to log in to The Standard's web portal to access the application, as detailed above.

For producer use only. Not for use with consumers.

Standard Insurance Company | 1100 SW Sixth Avenue, Portland OR 97204 | www.standard.com/di

The Standard Life Insurance Company of New York | 333 Westchester Avenue West Building, Suite 300
White Plains, New York | www.standard.com/di